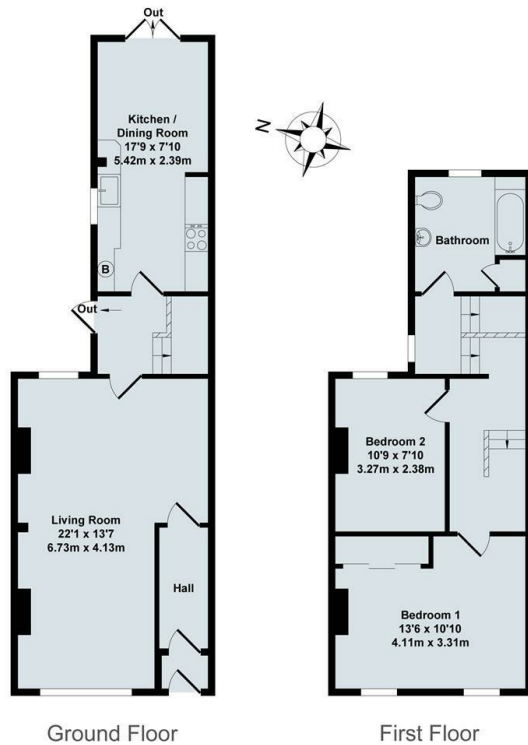




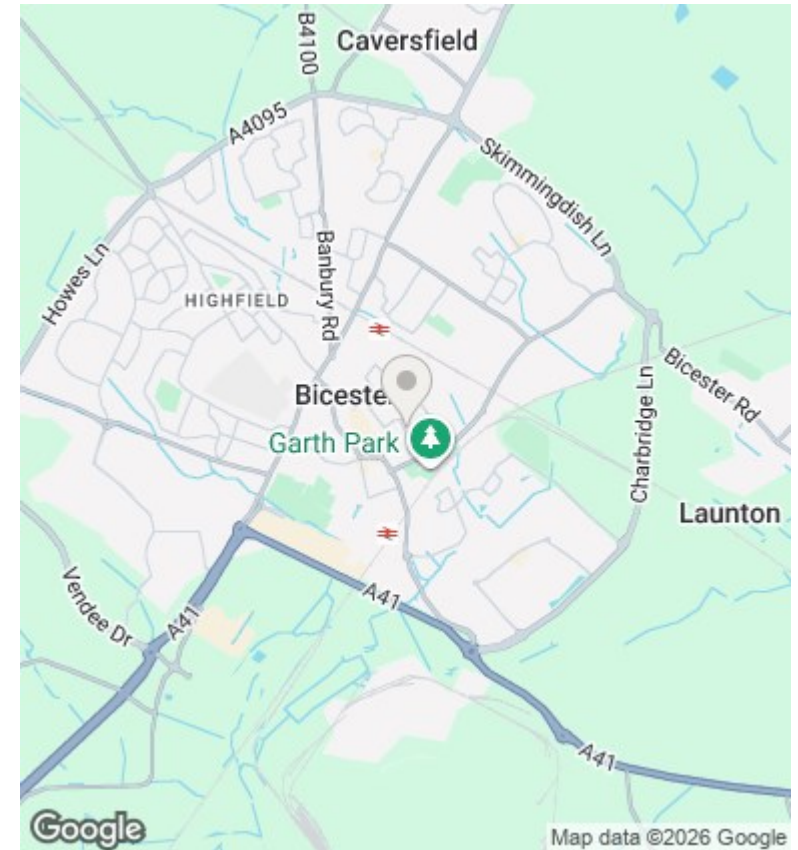
6 Newport Terrace, Bicester, OX26 6PU

£1,500 Per Month - 1st September 2026.

- Two bedroom period house
- Rear garden with shed
- EPC rating D
- Fully furnished
- On street parking
- Council Tax Band C
- Gas central heating
- Central location
- Mains gas electricity and water



Total Approx. Floor Area 900 Sq.Ft. (83.60 Sq.M.)
 All items illustrated on this plan are included in the "Total Approx Floor Area"



Directions

Viewings

Viewings by arrangement only. Call 01869 226888 to make an appointment.

Council Tax Band

C

EPC Rating:

D

Energy Efficiency Rating		Current	Potential
<i>Very energy efficient - lower running costs</i>			
(92 plus)	A		
(81-91)	B		81
(69-80)	C		
(55-68)	D	63	
(39-54)	E		
(21-38)	F		
(1-20)	G		
<i>Not energy efficient - higher running costs</i>			
England & Wales		EU Directive 2002/91/EC	